



summer 2024 group rates calendar

Aerial Tram Rides *Adults 17-64; Youths 7-16; Senior 65+; Children 6 and under are free.*

Group Size 15 or more	Adult	Youth/Senior	Group Size 15 or more	Adult	Youth/Senior	Group Size 15 or more	Adult	Youth/Senior
June			August			October		
Sunday, June 16	\$36	\$27	Friday, July 26	\$40	\$32	Tuesday, October 1	\$36	\$27
Monday, June 17	\$36	\$27	Saturday, July 27	\$40	\$32	Wednesday, October 2	\$36	\$27
Tuesday, June 18	\$36	\$27	Sunday, July 28	\$40	\$32	Thursday, October 3	\$36	\$27
Wednesday, June 19	\$36	\$27	Monday, July 29	\$36	\$27	Friday, October 4	\$36	\$27
Thursday, June 20	\$36	\$27	Tuesday, July 30	\$36	\$27	Saturday, October 5	\$40	\$32
Friday, June 21	\$36	\$27	Wednesday, July 31	\$36	\$27	Sunday, October 6	\$40	\$32
Saturday, June 22	\$36	\$27				Monday, October 7	\$36	\$27
Sunday, June 23	\$36	\$27				Tuesday, October 8	\$36	\$27
Monday, June 24	\$36	\$27				Wednesday, October 9	\$40	\$32
Tuesday, June 25	\$36	\$27				Thursday, October 10	\$36	\$27
Wednesday, June 26	\$36	\$27				Friday, October 11	\$36	\$27
Thursday, June 27	\$36	\$27				Saturday, October 12	\$36	\$27
Friday, June 28	\$36	\$27				Sunday, October 13	\$40	\$32
Saturday, June 29	\$36	\$27				Monday, October 14	\$36	\$27
Sunday, June 30	\$36	\$27						
July			September					
Monday, July 1	\$36	\$27	Sunday, September 1	\$40	\$32			
Tuesday, July 2	\$36	\$27	Monday, September 2	\$40	\$32			
Wednesday, July 3	\$36	\$27						
Thursday, July 4	\$40	\$32						
Friday, July 5	\$40	\$32						
Saturday, July 6	\$40	\$32						
Sunday, July 7	\$40	\$32						
Monday, July 8	\$36	\$27						
Tuesday, July 9	\$36	\$27						
Wednesday, July 10	\$36	\$27						
Thursday, July 11	\$36	\$27						
Friday, July 12	\$40	\$32						
Saturday, July 13	\$40	\$32						
Sunday, July 14	\$40	\$32						
Monday, July 15	\$36	\$27						
Tuesday, July 16	\$36	\$27						
Wednesday, July 17	\$36	\$27						
Thursday, July 18	\$36	\$27						
Friday, July 19	\$40	\$32						
Saturday, July 20	\$40	\$32						
Sunday, July 21	\$40	\$32						
Monday, July 22	\$36	\$27						
Tuesday, July 23	\$36	\$27						
Wednesday, July 24	\$40	\$32						
Thursday, July 25	\$36	\$27						

Scenic Tram Rooftop Deck

Access to the rooftop deck is available for a \$20 per person upgrade. This service requires a reservation and is only bookable at snowbird.com.

Book it now!

Snowbird Group Sales
801.947.8233
groupsales@snowbird.com



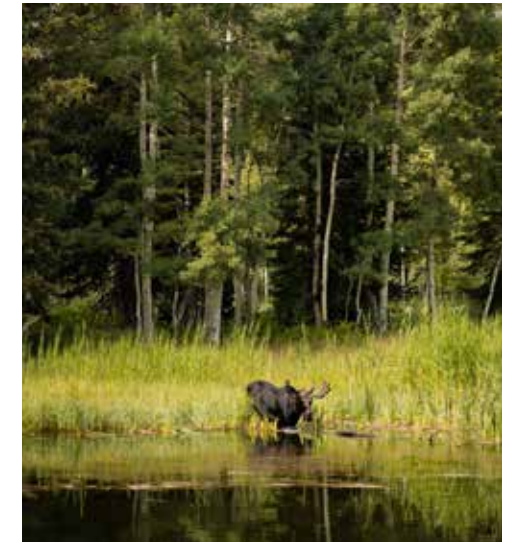
Peruvian Chairlift

When operating, the Peruvian chairlift may be used instead of the Tram for a ride up, down or in both directions. Tram tickets are valid on Peruvian Chairlift. From the Tram, a short, easy hike takes guests to the top of Peruvian Chairlift and access to the Wasatch Mining History Tunnel. Peruvian Chairlift operates approximately mid-July through mid-September, depending on snowpack and weather conditions. Please visit snowbird.com for operation status.



The Summit

At the top of the tram, 11,000 feet of elevation, is The Summit. Please visit snowbird.com for more information.



Mailing/Shipping/Contacts

Snowbird Group Sales
Snowbird Resort LLC
3165 E. Millrock Dr., Ste. 150
Salt Lake City, UT 84121

groupsales@snowbird.com
1.888.304.2473



payment and booking

To purchase group tickets with one payment please contact us by phone or email. Ticket orders can be paid for by credit card. We arrange for you to pick up your tickets on arrival at Snowbird. A minimum 7-days advance purchase is required for group discounts.

The used tickets from any ticket order where the net number of tickets used is fewer than the group minimum, will be charged at normal retail price as posted at the Snowbird Ticket Office.

Unused tickets can be returned to the Snowbird Ticket Office or mailed to the Group Sales department.

For returns with significant value please consider shipping using a traceable method (UPS/ FedEx etc).

Snowbird Group Sales